



Kisiizi Hospital Power Ltd

Annual Report 2010

This is the second annual report for Kisiizi Hospital Power Ltd for a calendar year. The plan was to produce annual reports for the financial year which is 1st July to 30th June but there was a major problem just as the financial year was ending. The report is being written by George Wadsworth, the manager who was in Kisiizi for January to March, and again from November to December. Two acting managers covered the period between, Jim Huthwaite from May until August and Dr Bill Cave from August to November. We are grateful for their help



Development phase

From May 2005 to September 2009, Charles Swainson was the project manager for KHP. During that time he built the power plant and fitted all the machinery. He was also responsible for commissioning the plant. On the 8th May 2009 the plant was running sufficiently well to be switched to power the hospital. The network of high and low voltage lines in the community was also completed in May.

By September 2009 everything was ready for the company to go commercial and begin selling electricity. Meters had been bought and sales management systems installed.

Charles left on mid-September 2009, and we spent a week together in the UK discussing the handover of the company. I arrived in Kisiizi on October and I took over as manager on October 5th.

Commercial phase

By December 2009, 88 customers were connected and a further 101 meters were on order. These were delivered at the end of January 2010.

The number of customers then increased steadily and by 19th May there were 149. The community has welcomed the supply of electricity and new businesses are being developed.

One of our first customers

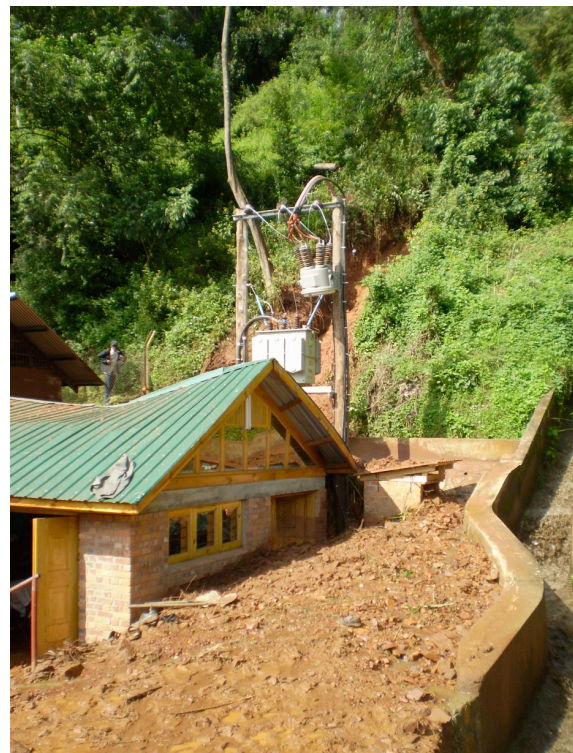


New wood machining workshop

Mudslide

During the night of May 16th there was an unprecedented amount of rain; this caused the channels to overflow. The water was channeled down the hillside above the penstock, it took with it soil and rocks which piled up on the rear of the power house causing the roof to collapse and leaving mud and rocks to a depth of about 3 feet in and around the power house. The load tank and other structures at the rear of the power house were dislodged.

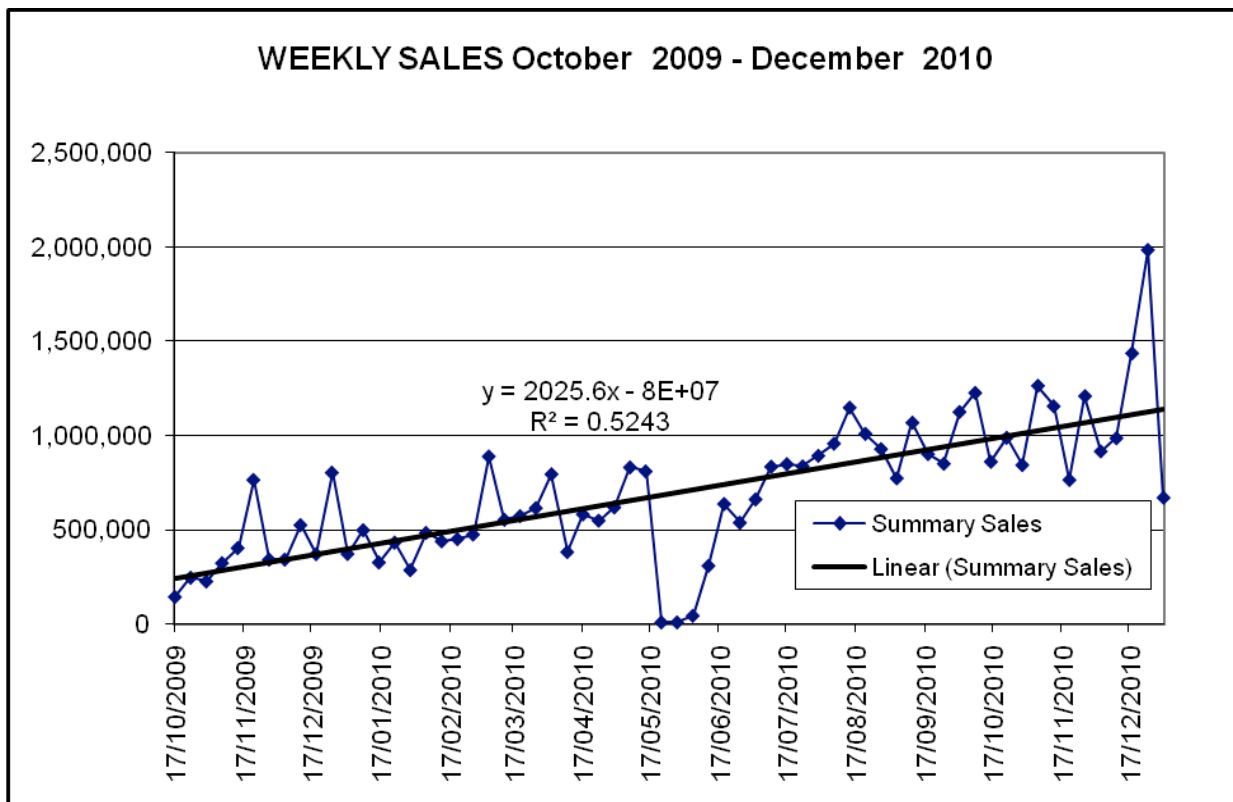
The debris was cleared away and the power house and the machinery cleaned and restored and the plant was working again by 10th June. The work of overseeing the restoration was carried out by Jim Huthwaite, the Acting manager who only arrived on May 14th, he did a great work along with the company staff. We are also very grateful to friends of Kisiizi who contributed generously to the cost of repairs.



Commercial operations

Apart from the mudslide problem, the company has developed steadily through the year. At the end of December 2010 there were 201 customers, the target is 300. In December the delivery of more meters was awaited but these did not arrive until after the end of the year. By this time about 20 new customers were waiting connection.

Sales increased steadily as shown by the graph below.



Network Extensions

We continue to receive requests for extensions to the overhead lines. Some small low voltage extensions have been carried out where the customers have been willing to pay the full cost. One major extension has been declined as there would not be sufficient power to supply all who wish to be connected.

External consultants

KHPL is very grateful for technical help from external consultants, all of which has been provided free of charge. We also keep in close touch with Charles Swainson who brought the scheme to fruition.

Future plans

The plan is to limit the number of customers to 300 until the supply of electricity is augmented by power from the National Grid.

A new manager is required to take on the company.

